

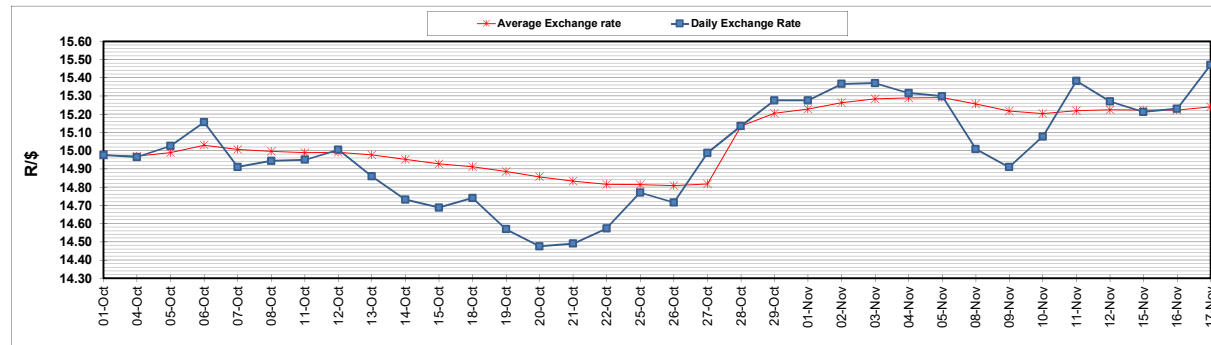
	PETROL 95 ULP	PETROL 93 ULP & LRP	DIESEL 0.05%	DIESEL 0.005%	ILL. PAR.
GAUTENG PUMP PRICE (SA c/l) AS FROM 03/11/2021	1,954.000	1,932.000	-	-	-
WHOLESALE PRICE (SA c/l) AS FROM 03/11/2021	-	-	1,719.980	1,723.380	1,125.488
SINGLE NATIONAL MAXIMUM RETAIL PRICE	-	-	-	-	1,433.000
BASIC FUEL PRICE - 17/11/2021 (SA c/l)	939.895	925.518	921.078	926.768	906.387
PRESS RELEASE CONTRIBUTION TO BFP 03/11/2021 - 17/11/2021 (SA c/l)	937.110	925.110	917.630	921.030	912.128
UNIT OVER/(UNDER) RECOVERY - 17/11/2021 (SA c/l)	(2.785)	(0.408)	(3.448)	(5.738)	5.741
AVERAGE BASIC FUEL PRICE 28/10/2021 - 17/11/2021	959.676	939.851	929.147	934.945	920.404
AVERAGE UNIT OVER/(UNDER) RECOVERY 28/10/2021 - 17/11/2021	(54.246)	(46.422)	(50.450)	(52.847)	(46.943)

ANALYSIS MOVEMENT OF AVERAGE OVER/(UNDER) RECOVERY

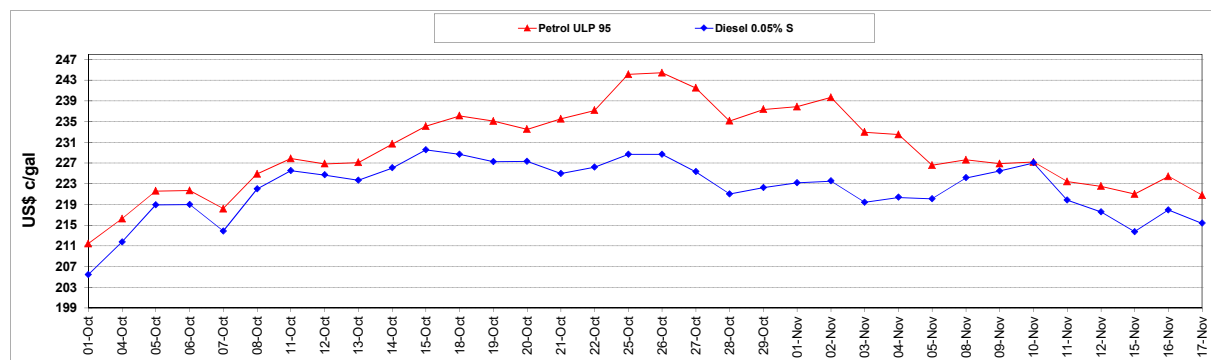
	PETROL 95	PETROL 93	DIESEL 0.05%	DIESEL 0.005%	ILL. PAR.
- MOVEMENT IN INTERNATIONAL PRODUCT PRICES	(27.641)	(20.365)	(24.691)	(26.928)	(21.427)
- MOVEMENT IN EXCHANGE RATE	(26.605)	(26.056)	(25.759)	(25.920)	(25.516)
AVERAGE UNIT OVER/(UNDER) RECOVERY 28/10/2021 - 17/11/2021	(54.246)	(46.422)	(50.450)	(52.847)	(46.943)

R/\$ EXCHANGE RATE - (R/\$15.4700 - 17/11/2021)

EXCHANGE RATE USED IN BASIC FUEL PRICE



INTERNATIONAL PRODUCT PRICES OF BASKET USED IN BASIC FUEL PRICE



BASIC FUEL PRICE IN SA CENTS PER LITRE

